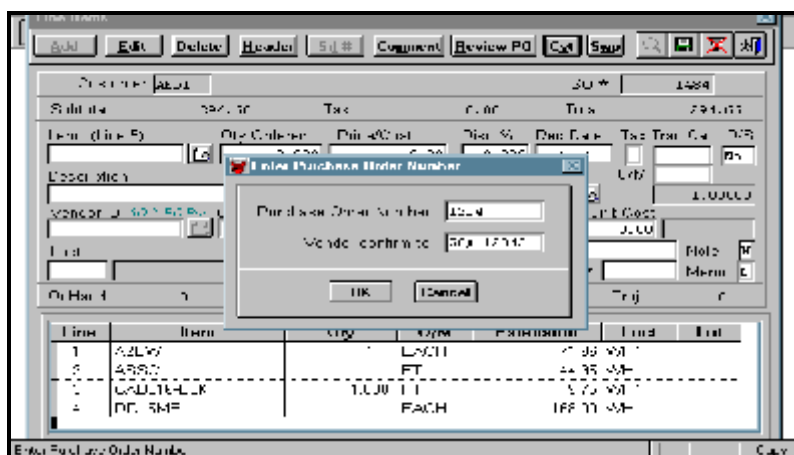


# SO-2-PO PRO 5.0

*SO-2-PO Pro 5.0 converts sales order line items into purchase orders automatically. SO-2-PO Pro is an ideal solution for SBT ProSeries users who want to write purchase orders at the same time that they write sales orders and link the two.*

## Features of SO-2-PO Pro

- New!** Ability to print purchase orders immediately after creating
- New!** Ability to copy sales order ship-to address to purchase order ship-to address to create a de facto drop ship purchase order
- C Generates drop-ship and standard purchase orders *while entering or editing sales orders and sales order bids.*
- C Closes the SBT “drop-ship gap” between SO and PO
- C Ability to convert single sales order line items to purchase orders immediately or all together as a batch
- C “Review PO” lets you see what is in each “proto” purchase order
- C Full support for multiple locations, lots, serial numbers and alternate costing methods.
- C Full support for multiple item suppliers, including ability to add suppliers on-the-fly
- C Combines sales order line items from common suppliers into single purchase orders
- C Complete ability to edit “proto” purchase orders before they are generated, including header information and comments
- C Captures expected supplier cost in the sales order when vendor is identified
- C Able to review item suppliers within a sales order and select most suitable based in price, performance, order requirements and credit availability
- C Interface and programming standards compatible with *SBT ProSeries 5.0* standards
- C Modifiable when purchased with source code
- C Fast, reliable and easy to use
- C 100% compatible with *Lefkowitz Systems, Inc. Auto PO Pro*



Creating purchase orders from sales orders is easy with *SO-2-PO Pro!*

## Who Needs SO-2-PO?

Sales organizations which carry no or little on-hand inventory.

Expeditors looking for parts to complete orders.

Distributors who sell special-order items.

Heavy-duty *drop-shippers* dissatisfied with SBT's native drop ship function.

Anyone who is serious about reducing their cost of sales and increasing sales margins.

## SO-2-PO Pro Specifications

SO-2-PO Pro 5.0 is compatible with ProSeries 5.0 builds 706 and later.

## Standard Reports

*SO-2-PO Transaction Report.* Lists sales order detail including related purchase order number, unit cost, and receipt status. Custom menu activated (no program modification required).

## Resellers:

Ask about dealer discounts

## Also Available:

SO-2-PO Pro for ProSeries 3.0i, 3.2i & VisionPoint 2000

Auto PO Pro for ProSeries 2.5, 3.0i, 3.2i and 5.0

Auto PO Classic (for Series 6/7 & VisionPoint)

MakeHistory for ProSeries 3.0i, 3.2i and 5.0

Installment Sales for ProSeries 3.0i and 3.2i

Payment Days Updater for ProSeries 3.0i, 3.2i and 5.0

Check Register Distributor for Series 7 and ProSeries 2.5, 3.0i, 3.2i and 5.0

Invoice Register Distributor for VisionPoint ProSeries 3.0i, 3.2i and 5.0

## Need to Know More?

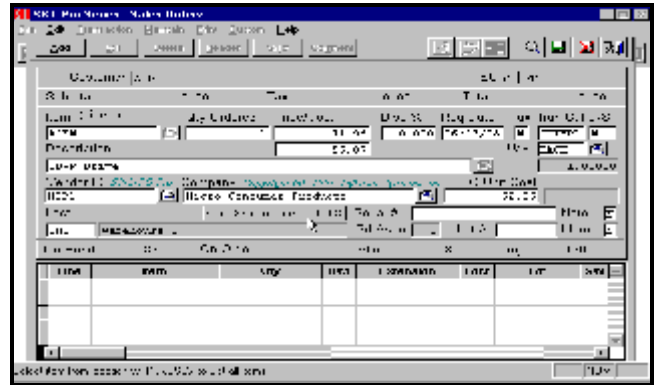
Lefkowitz Systems, Inc.  
1485 Bayshore Boulevard  
San Francisco, CA 94124 USA

Tel: (415) 657-9900 9:30 - 5:30 PDT  
Fax: (415) 657-9902 anytime

# Writing purchase orders from sales orders is easy with SO-2-PO

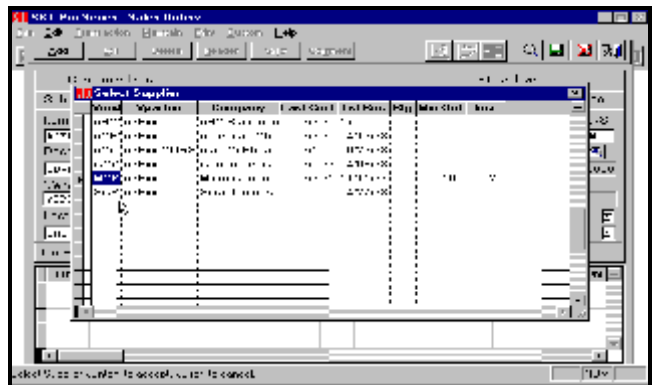
**Step 1:** Enter the sales order line item, either drop ship or non-drop ship.

Notice the new fields: *Vendor ID* and *Company*. Here, exactly where they should be, you can pick vendors for your sales order line items.



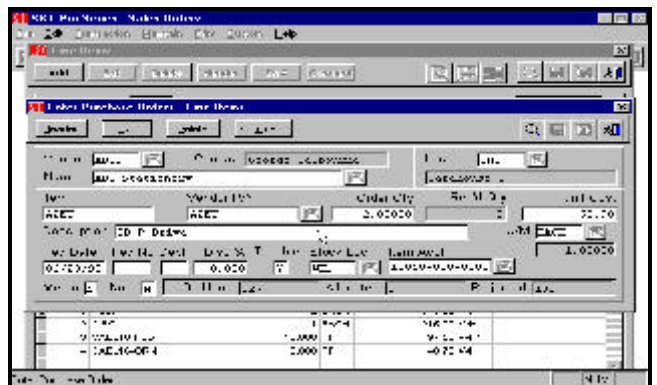
**Step 2:** Pick a vendor and enter the cost.

Select from the list of current suppliers, all vendors or add a new vendor on-the-fly. You choose.



**Step 3, Optional:** Review your pending purchase orders.

Change the purchase order header, comments, switch to a new vendor or call the whole thing off.



**Step 4:** Convert to purchase orders immediately or generate purchase orders for all items when you save the sales order.

Line items from the same vendor are combined. Drop ships and normal purchase orders are both handled properly. And it's all done from within the sales order!

